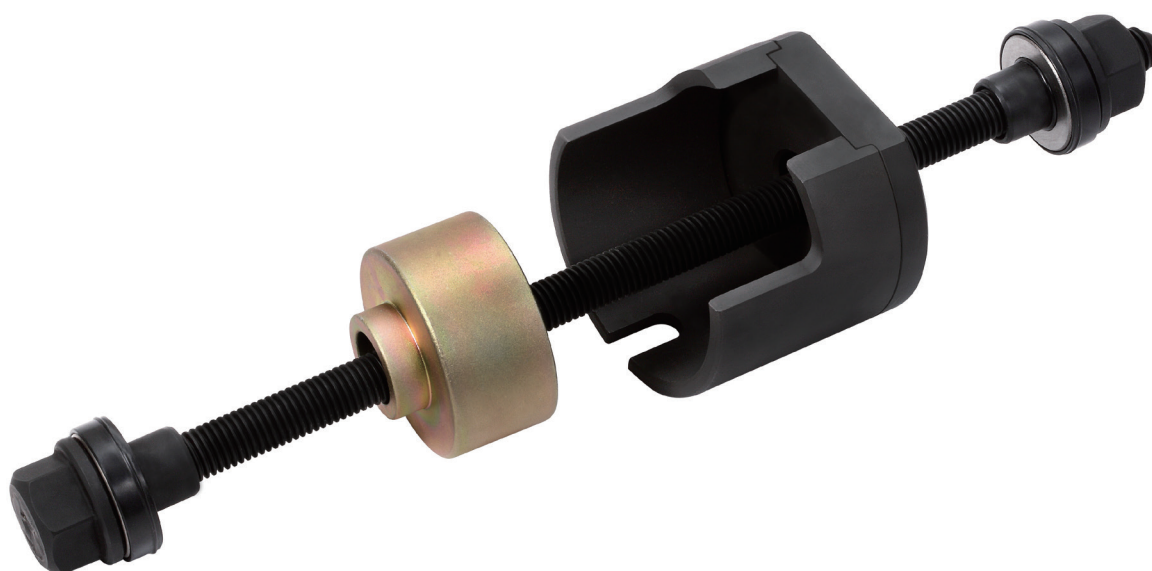




BUSHING TOOL FOR TESLA MODEL 3 ELECTRIC MOTOR



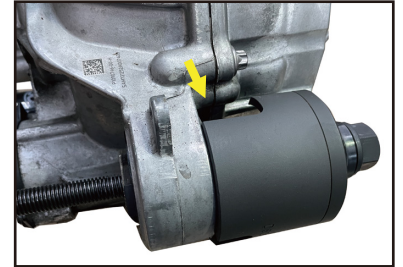
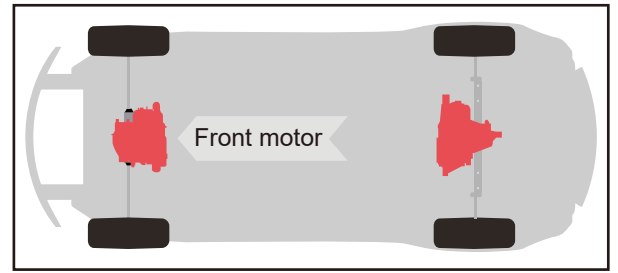
1. FEATURES

2. SPECIFICATIONS

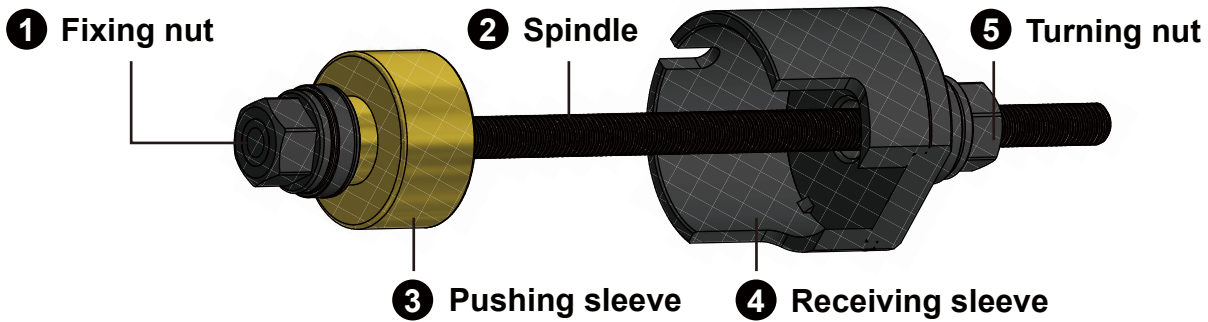
3. INSTRUCTIONS

1. FEATURES

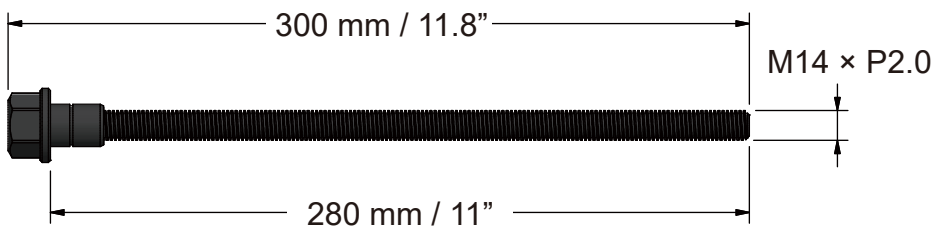
- Tool to remove an old bushing or install a new bushing on Tesla Model 3 electric motor (only for front electric motor)
- The black sleeve with a special side cutout specifically design for Tesla Model 3 (see arrow in the image on the right)



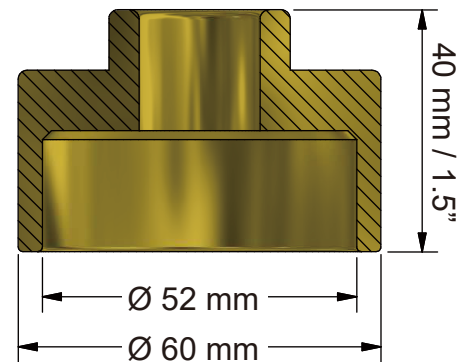
2. SPECIFICATIONS



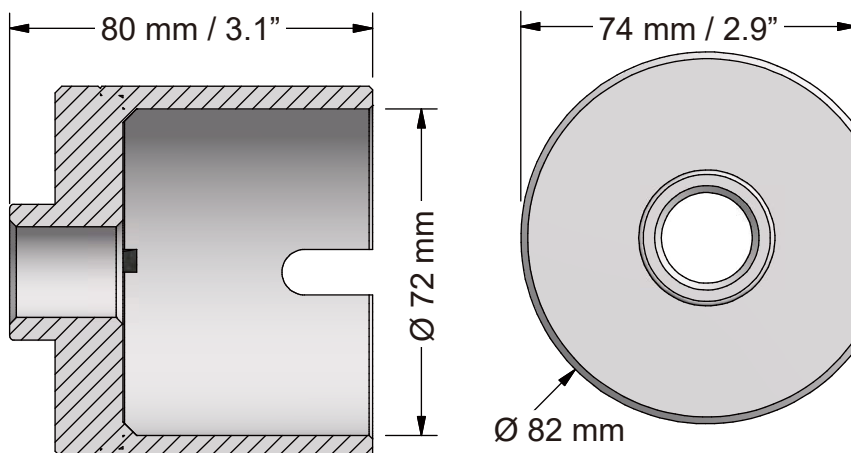
1 Fixing nut 2 Spindle



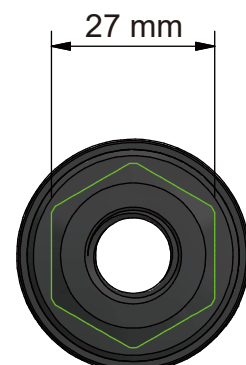
3 Pushing sleeve



4 Receiving sleeve



5 Turning nut



3. INSTRUCTIONS



CAUTION



- Always read the instructions carefully before using the tool
- Ensure the sockets are installed in a straight line on the bushing housing
- This tool kit is for MANUAL operation ONLY
- DO NOT use an impact tool or air wrench to operate this tool kit
- Always ensure tool installation is securely connected before removing/installing the bushings
- Ensure the working area has adequate lighting
- Keep children and unauthorized persons away from the working area
- Keep working area clean and tidy, dry and free from unrelated materials
- DO NOT allow untrained persons to use this tool kit
- Always wear eye protection that meets OSHA and ANSI Z87.1 standards
- Always wear gloves when working with the tool
- Always wear ear protection
- Disposal: Customers should follow local regulations to handle used/waste parts

REMOVE AN OLD BUSHING

- 1 Locate the bushing house (Fig. 1)
- 2 Install the receiving sleeve on the spindle and the fixing nut
- 3 Insert the spindle and receiving sleeve through the central hole on the bushing (Fig. 2)
- 4 On the other side of the bushing, insert the pushing sleeve through the spindle
- 5 Screw in the turning nut on the spindle until the nut reaches the pushing sleeve.
- 6 Make sure that all the tool parts are aligned with the bushing central line (as the dotted line shows on Fig 3)
- 7 Use two 27 mm spanners. One to hold on the fixing nut, and another one for turning (Fig. 3).
- 8 Turn the nut clockwise and the pushing sleeve will gradually push the old bushing out of the bushing housing.

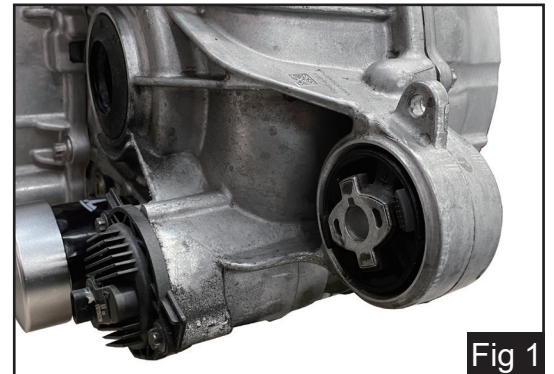


Fig 1

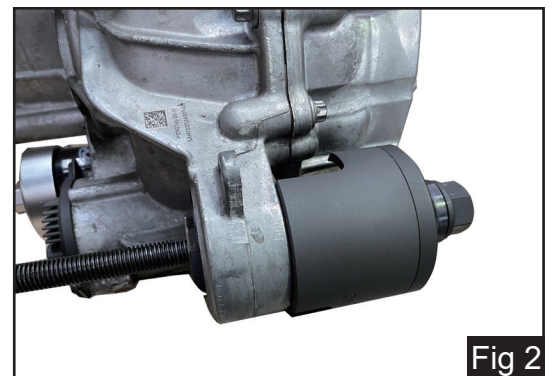


Fig 2

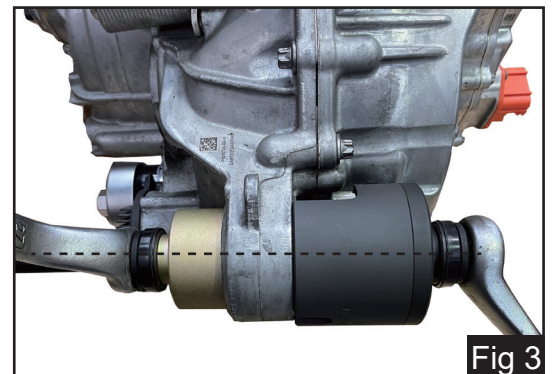


Fig 3

INSTALL A NEW BUSHING

- 1 Install the receiving sleeve on the spindle and the fixing nut
- 2 Insert the spindle and receiving sleeve through the central hole on the bushing (Fig. 2)

- 3** On the other side of the bushing, insert a new bushing and the pushing sleeve through the spindle.
- 4** Screw in the turning nut on the spindle until the nut reaches the pushing sleeve.
- 5** Make sure that all the tool parts are aligned with the bushing central line.
- 6** Use two 27 mm spanners. One to hold on the fixing nut, and another one for turning.
- 7** Turn the nut clockwise and the pushing sleeve will gradually push the new bushing into the bushing housing.